

Iron Ore Briefing Service

FOURTH QUARTER 2007 – A SPECIAL FOCUS ON PRICES

“ We have never known such a wide spread of price forecasts – increases from 15% to 50%, and even 100%! ”

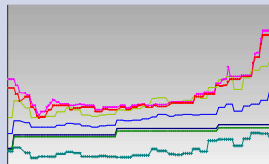
The Metalytics Briefing Service is designed for

- Iron ore producers, traders, and consumers who want succinct targeted data and forecasts
- Equities research and investment analysts

COMMENTARIES

State of the Market

Astronomical spot prices, inflated ocean freight rates and the potential takeover of Rio Tinto by BHP Billiton lead the industry into the 2008 contract negotiations.



We are maintaining our forecast of 45% price increase for fines and lumps in the 2008 contract year.

In the Pipeline

The New Brazilians

One of Brazil’s leading steelmakers CSN has huge ambitions to enter the big league of iron ore producers with a US\$2.8B development of its captive Casa de Pedra mine, and is targeting exports of more than 50Mtpa. Meanwhile, new company MMX has three significant new projects totaling US\$3.9B and partnerships with Cleveland-Cliffs and Anglo American.

Feature

Perspectives on Iron Ore Prices

How do current and forecast prices relate in real terms or in producer and consumer currencies?
Are the days of benchmark prices numbered?

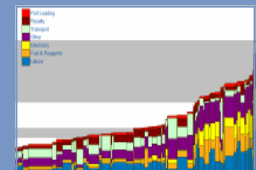
STATISTICAL COMPENDIUM 2000-2015

- Steel Consumption
- Steel production
- Blast Furnace & DRI
- Iron Ore Demand
- Iron Ore Supply, Mine & Company Production
- Iron Ore Trade
- Iron Ore Prices & Price Analytics
- Capability & Forecast Scenarios

DYNAMIC COST MODEL

Analyse costs by:

- product, mine, company, country
- process or input



Explore sensitivity to exchange rates, fuel prices etc.

MINE & PROJECT PROFILES

94 mines in 16 countries

- History and ownership
- Geology & ore details
- Facilities and logistics
- Capacity, plans, production



Contact us

Metalitics Pty Ltd
ABN 30 115 924 233
www.metalitics.com.au

Level 9, 280 George St
NSW 2000 Australia

GPO Box 4739
NSW 2001 Australia

Phone: +61 2 9225 6400
Fax: +61 2 9231 1344

